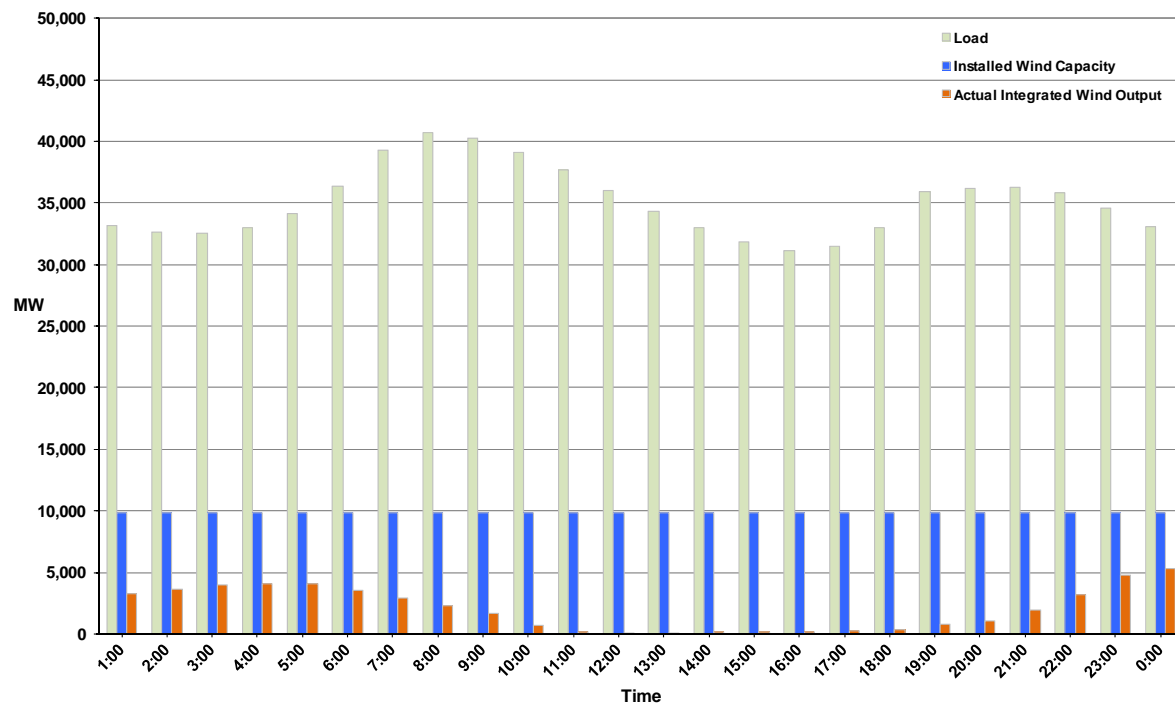




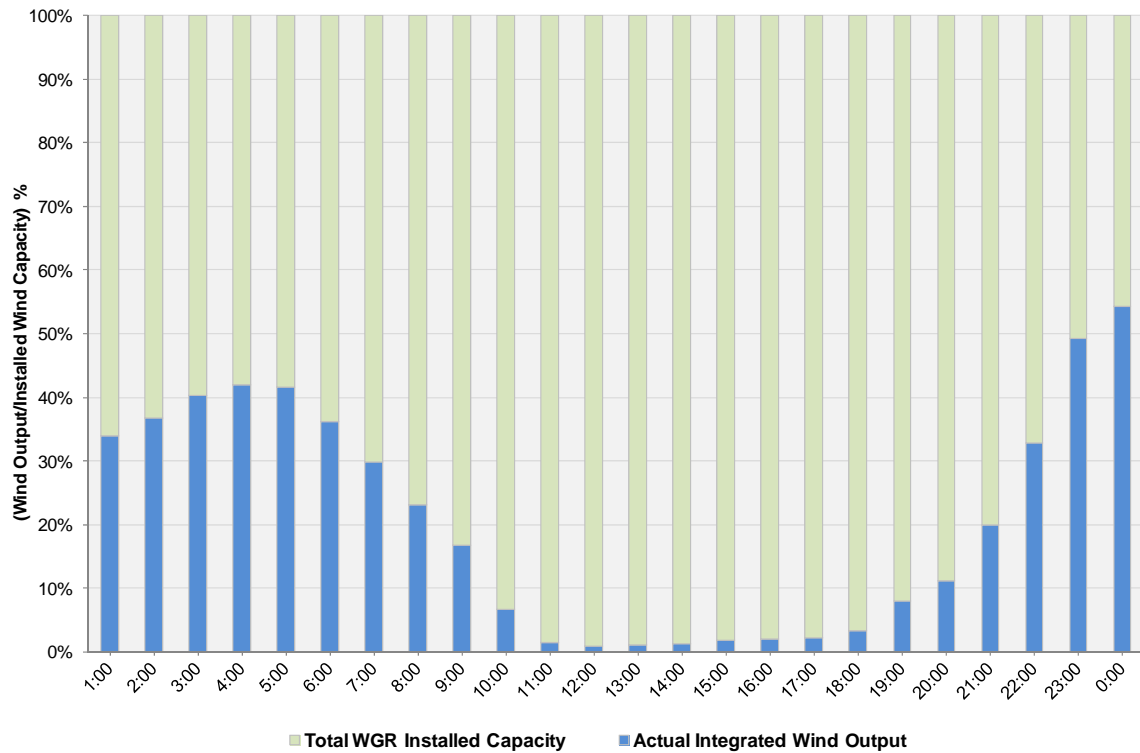
ERCOT Grid Operations Wind Integration Report: 12/27/11

Peak Load	40,709 MW
Load Peak Hour (HE)	08
Wind over Peak	2,266 MW
Wind Record 10/07/11	7,400 MW
Max Wind Value	5,503 MW
Wind Peak Time	23:35
Wind Integration %	16.68%

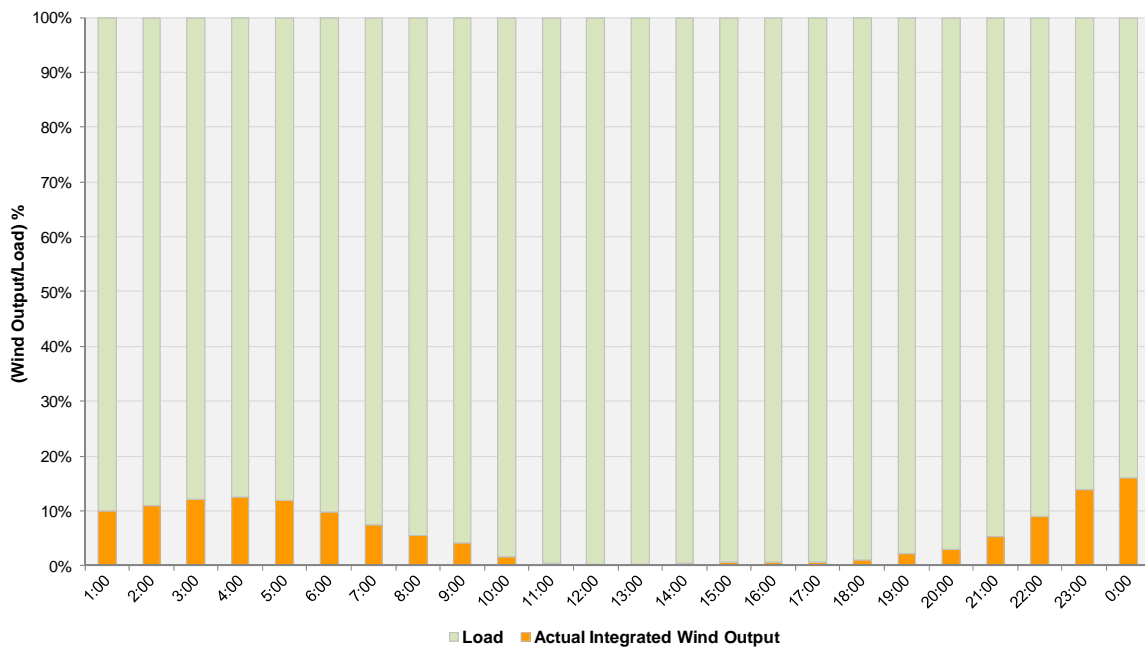
**Hourly Average Actual Load vs. Actual Wind Output
12-27-2011**



Actual Wind Output as a Percentage of the Total Installed Wind Capacity
12-27-2011



Actual Wind Output as a Percentage of the ERCOT Load
12-27-2011



ERCOT Load vs. Actual Wind Output 12/20/2011 - 12/27/2011

